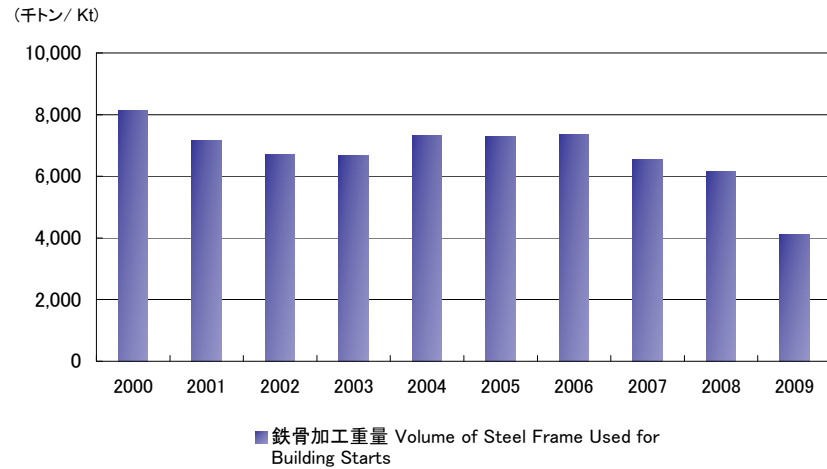
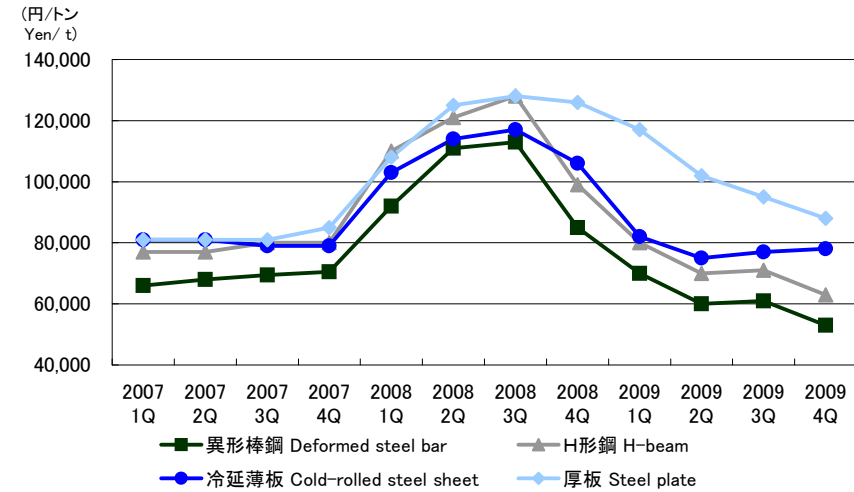


■鉄骨加工重量の推移
Volume of Steel Frame Used for Building Starts



■鋼材価格の推移
Steel Product Prices



鉄骨加工重量 Volume of Steel Frame Used for Building Starts

暦年	Calendar year		2000	2001	2002	2003	2004	2005	2006	2007	2008	2009
鉄骨加工重量	Volume of Steel Frame Used for Building Starts	千トン Kt	8,142	7,174	6,698	6,676	7,324	7,281	7,366	6,533	6,165	4,099

[資料] 国土交通省:建設統計 建築物着工床面積構造別 (鉄骨造:㎡×100kg)+(鉄骨鉄筋コンクリート造:㎡×50kg)

[Resource] MLIT: Construction Statistics; Building Starts by Structure (Floor Area) (Steel Frame (S): ㎡×100kg)+(Steel Frame Reinforced Concrete (SRC): ㎡×50kg)

鋼材価格の推移 Steel Product Prices

暦年	Calendar year		2007 1Q	2007 2Q	2007 3Q	2007 4Q	2008 1Q	2008 2Q	2008 3Q	2008 4Q	2009 1Q	2009 2Q	2009 3Q	2009 4Q
異形棒鋼	Deformed steel bar	円/トン Yen/t	66,000	68,000	69,500	70,500	92,000	111,000	113,000	85,000	70,000	60,000	61,000	53,000
H形鋼	H-beam	円/トン Yen/t	77,000	77,000	80,000	80,000	110,000	121,000	128,000	99,000	80,000	70,000	71,000	63,000
冷延薄板	Cold-rolled steel sheet	円/トン Yen/t	81,000	81,000	79,000	79,000	103,000	114,000	117,000	106,000	82,000	75,000	77,000	78,000
厚板	Steel plate	円/トン Yen/t	81,000	81,000	81,000	85,000	108,000	125,000	128,000	126,000	117,000	102,000	95,000	88,000

注:

1. 各製品の価格は、期末の東京高値を使用しています。

[資料] 鉄鋼新聞社:鉄鋼・非鉄市中相場

[Resource] TEKKO SHIMBUN CORP.: Iron & steel market price (Tokyo / Higher prices)

Note:

1. The prices of products are the higher prices in the Tokyo market at the end of the period.